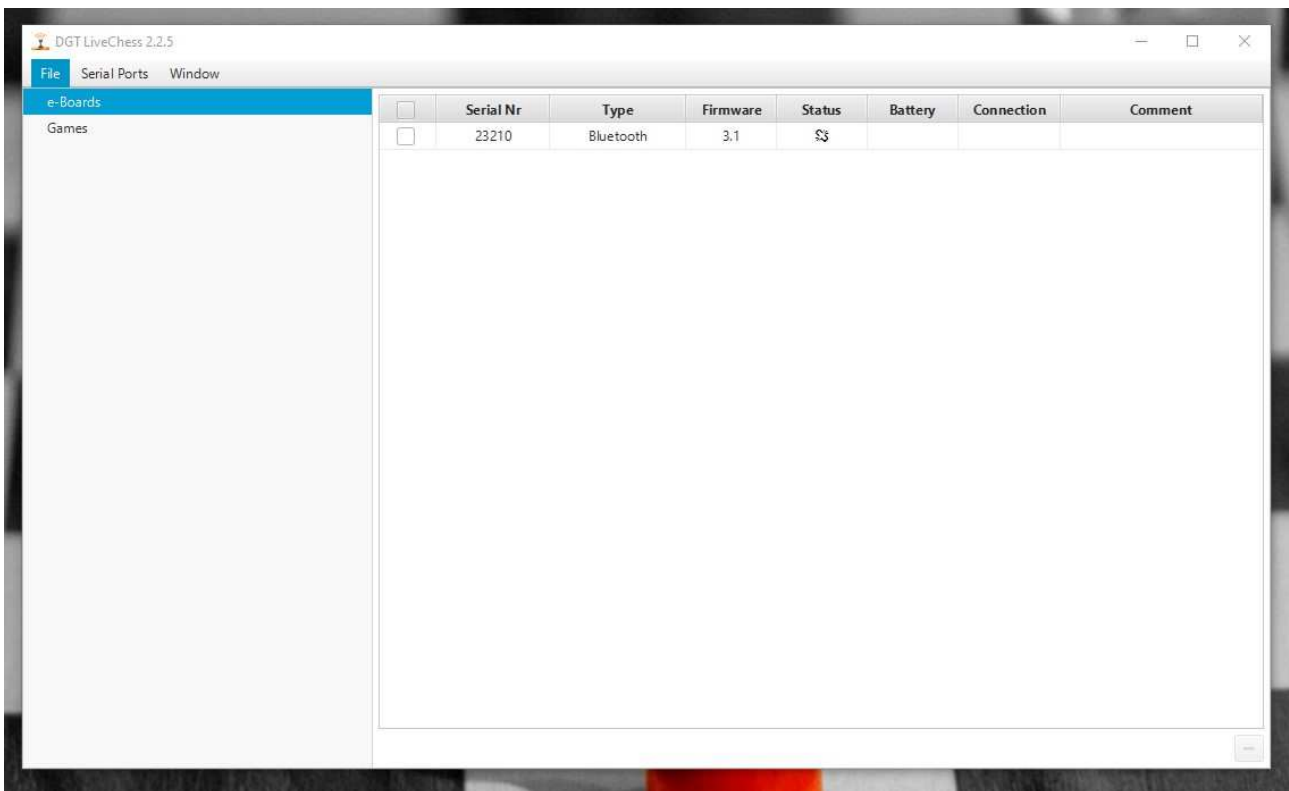




How to delete e-Boards from DGT Live Chess.

This is only a workaround to fix this problem. It's not a final solution. And it's still a major issue for DGT to solve this problem in their software!!!

You need DGT Live Chess if you want to broadcast games played on DGT e-Boards in an OTB tournament or if you want to connect your DGT e-Board with Lichess or Tornelo.



If you use DGT Live Chess for Lichess or Tornelo you need a computer where DGT Live Chess was never installed before! If the software was already installed and you have used more than one e-Board then DGT Live Chess will select an e-Board by itself or the Tornelo connection. If you have no access to this unique e-Board you can't use this e-Board. You cannot change the e-Board selected and you won't be able to delete previously installed e-Boards in DGT Live Chess, even after reinstalling the software.

This workaround describes how to solve the problem.

**Be sure that you are familiar with Windows on expert level before you try this!
I'm not responsible for any damages originating from using this workaround!**



DGT Live Chess stores the settings for e-boards and COM ports not in the registry. They are stored in the APP DATA directory:

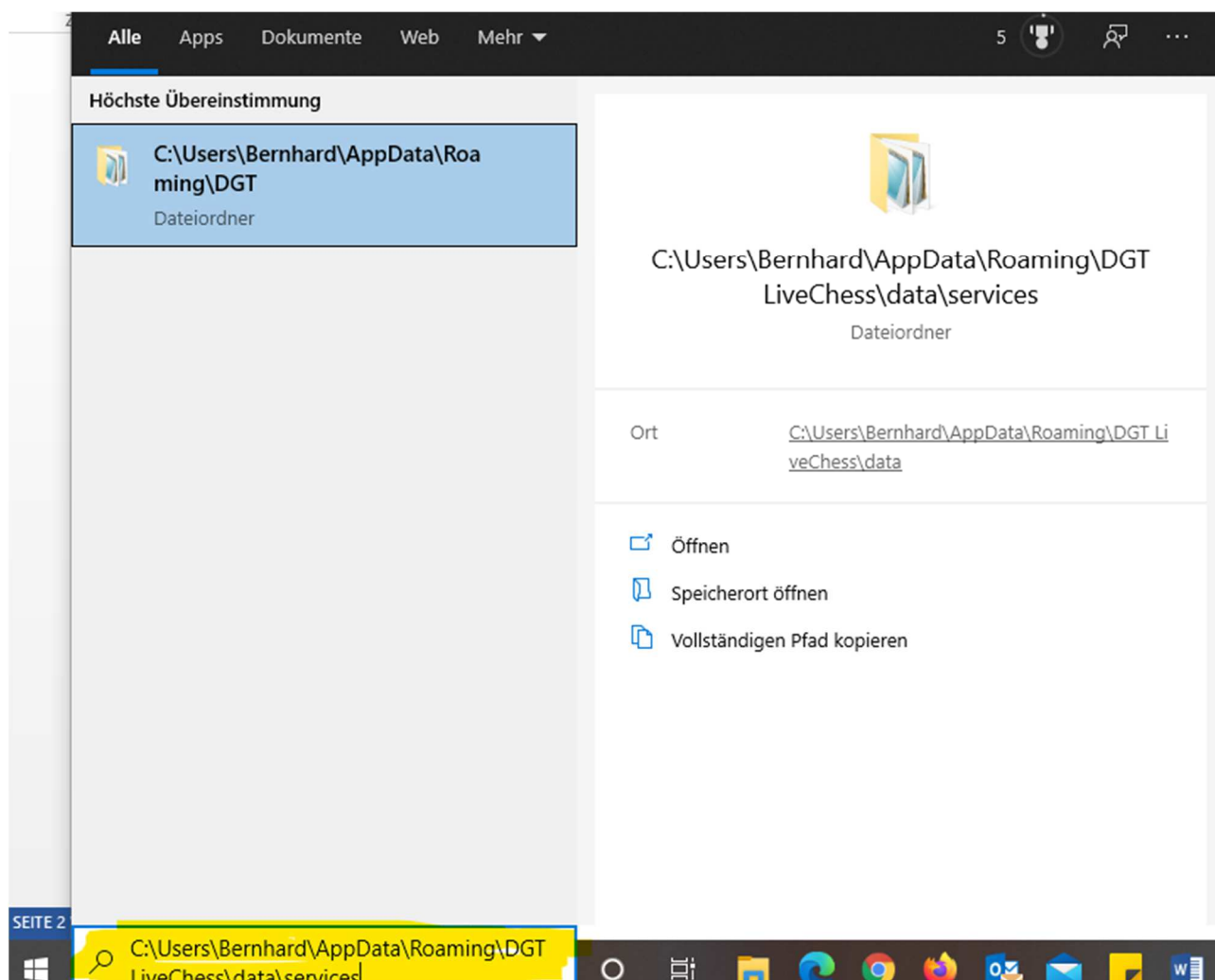
C:\Users\USERNAME\AppData\Roaming\DGT LiveChess\data\services

In this manual I use "Bernhard" as Username.

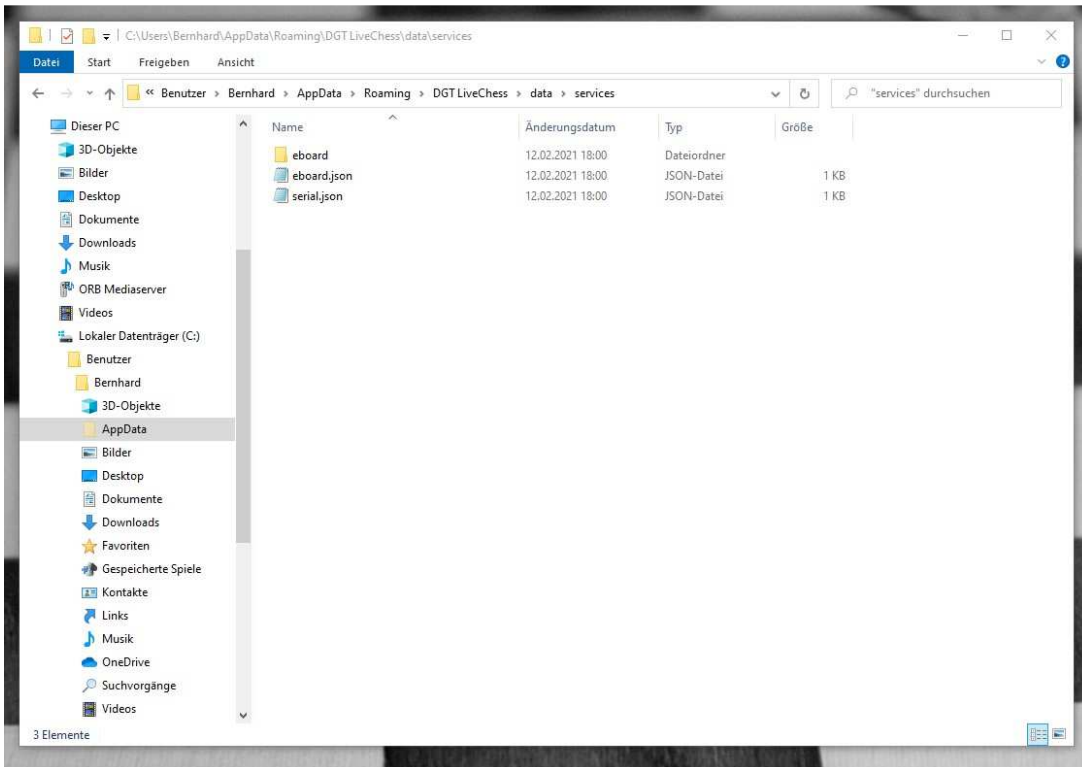
So let's start!

Go to the directory

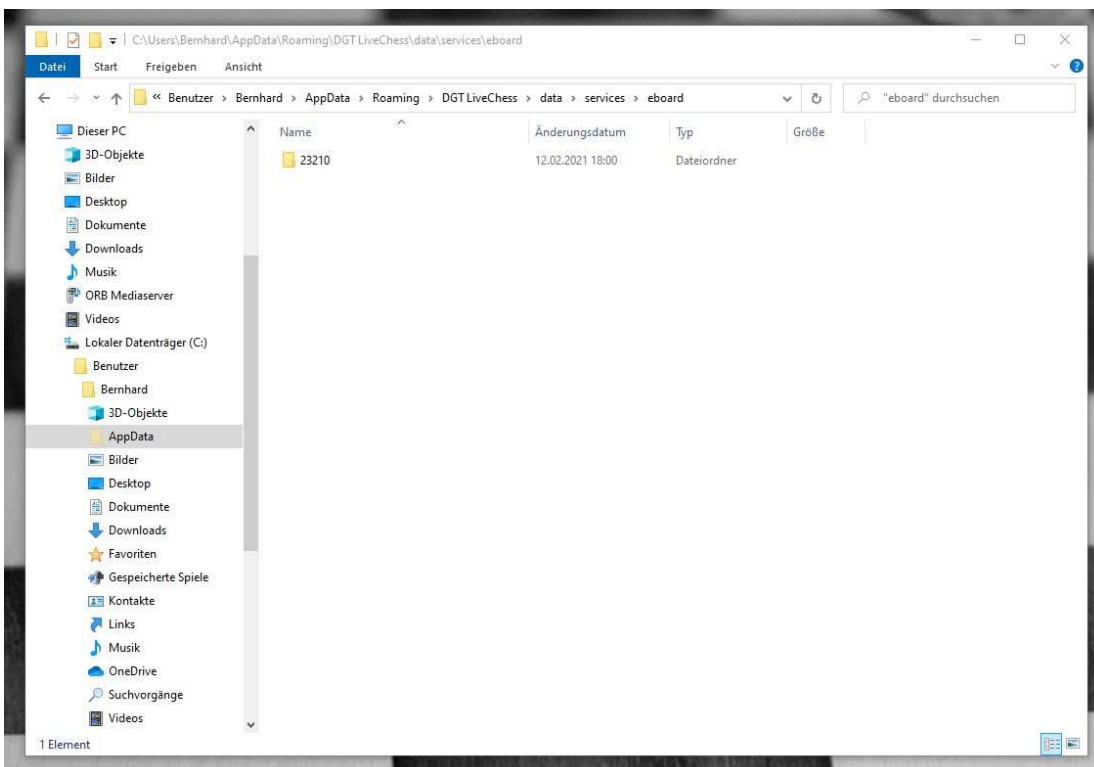
C:\Users\Bernhard\AppData\Roaming\DGT LiveChess\data\services



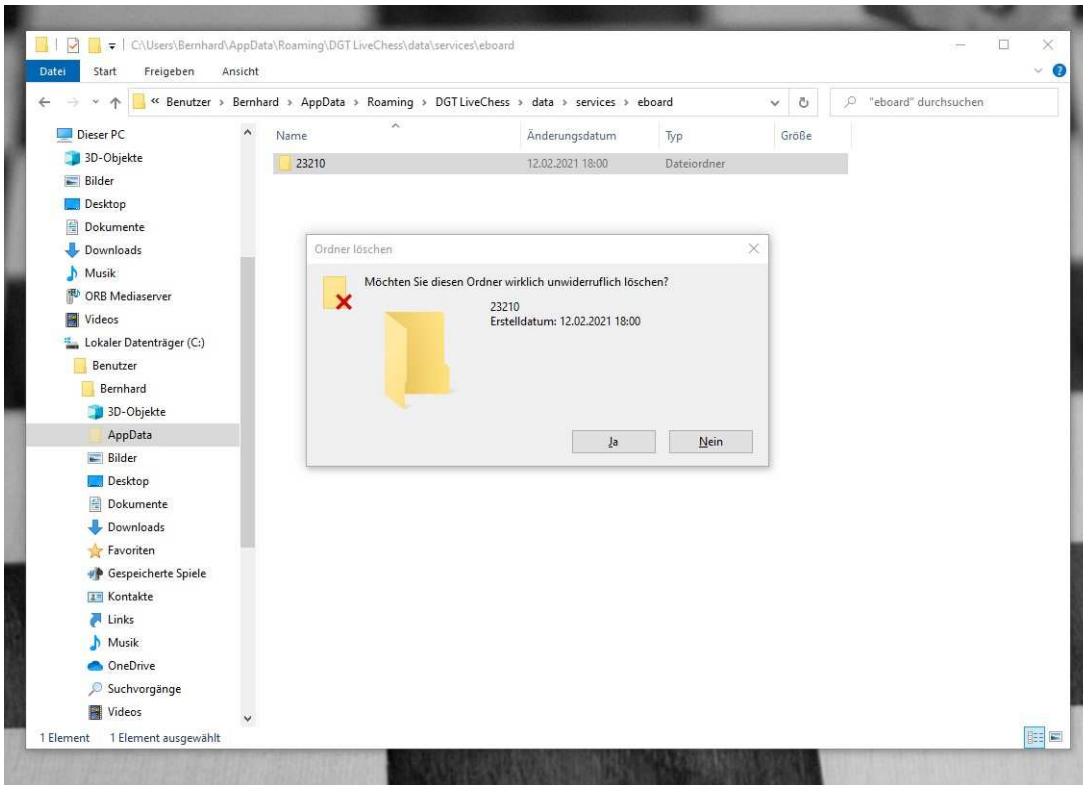
Maybe you have to activate that hidden files are shown in the explorer settings.



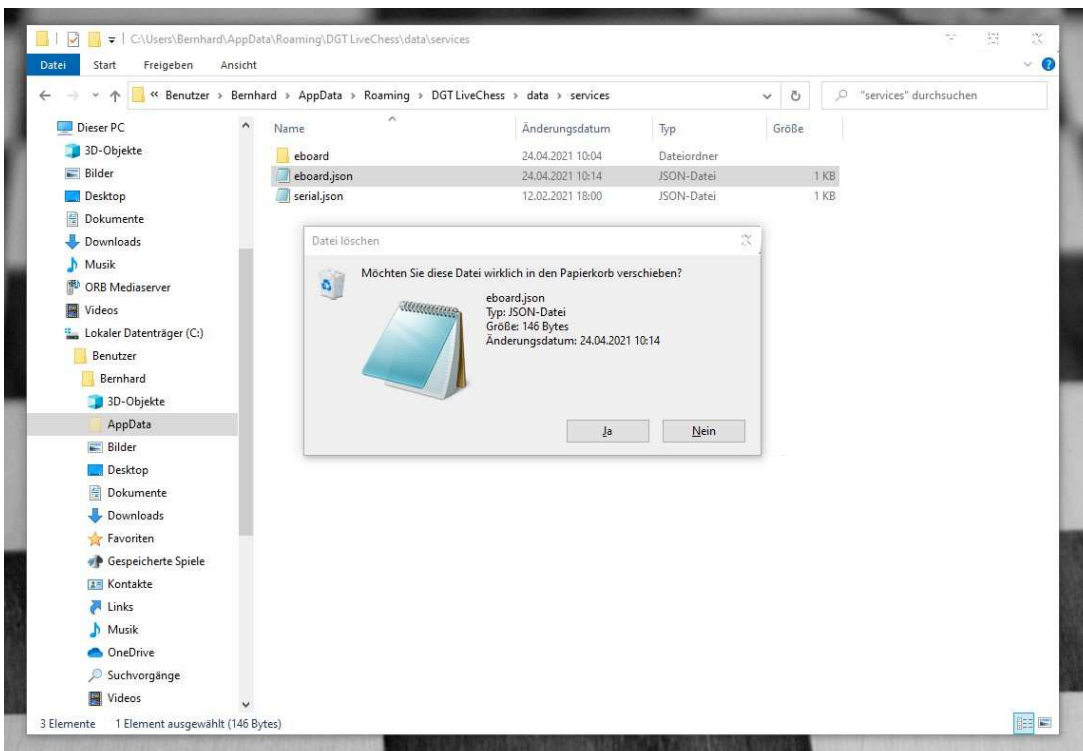
This is the content of the directory:
the sub-directory “eboard” and two files “eboard.json” an “serial.json”



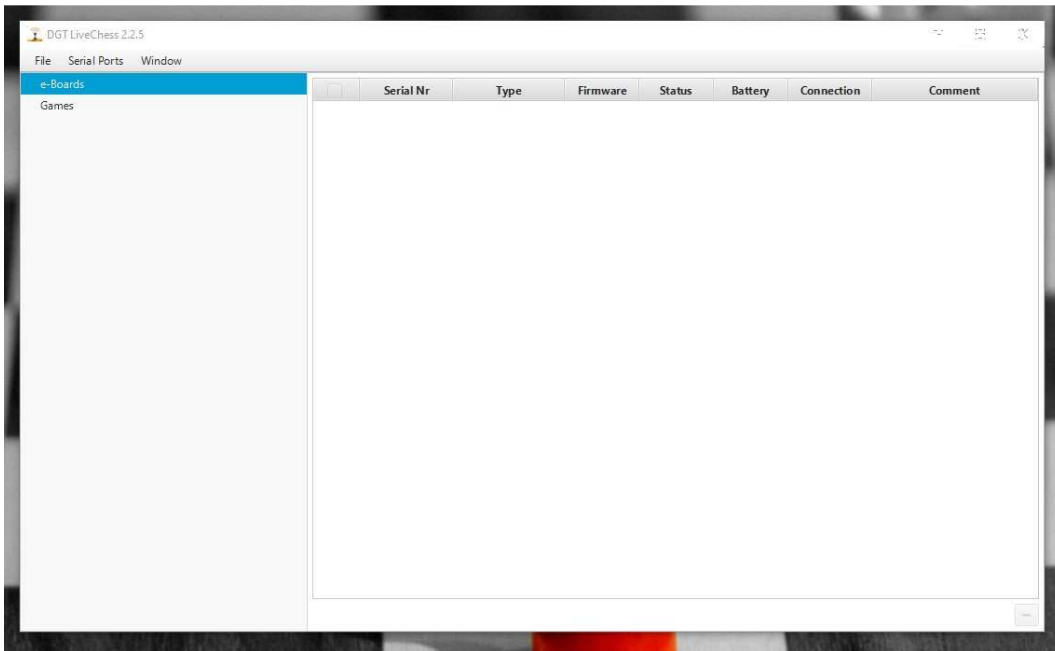
In the sub-directory “eboard” are more sub-directories for every e-Board which was connected to this computer.



Now delete all these subdirectories.



And delete the file "eboard.json".



And after restart there are no more e-boards listed in DGT Live Chess 😊

Attention!

Sometimes this doesn't work and you will receive an error message from DGT Live Chess. In these cases you have to delete the whole content of the directory

C:\Users\USERNAME\AppData\Roaming\DGT LiveChess\data\services

And after that you need to reinstall DGT Live Chess – maybe including the DGT e-Board drivers and the Rabbit Plugin.



Bernhard Riess
FIDE Arbiter

br@fvschach.de

Version 001, May 3rd 2021